

## QUICK GUIDE

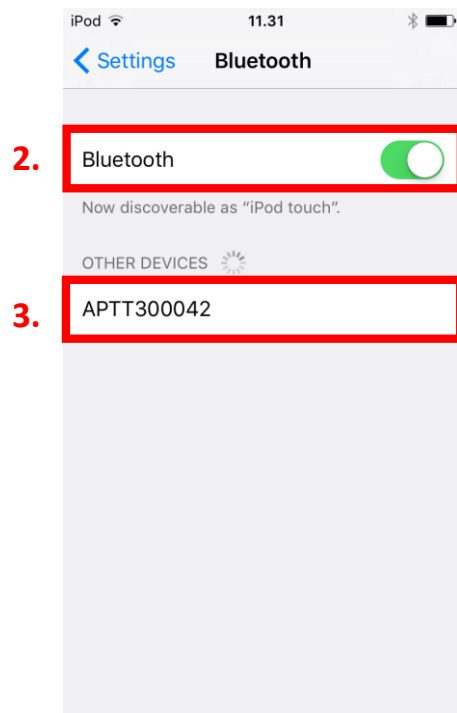
# Connecting your PTT Voice Responder to ESChat (iOS) (EN)



# A

## Pairing your PTT Voice Responder with your iPhone via Bluetooth

1. Turn on your PTT Voice Responder by holding down the Power button for more than 3 seconds. After it is on, a blinking green light will indicate that the device is ready for pairing.
2. Turn on your iPhone's Bluetooth by going to: Settings → Bluetooth → Turn on.
3. Pair your PTT Voice Responder to your iPhone by selecting it from the Devices list. To know which device to select from the list, check the unique friendly name on the back of your Voice Responder. Once it has successfully paired, a blue light will begin blinking on your device.



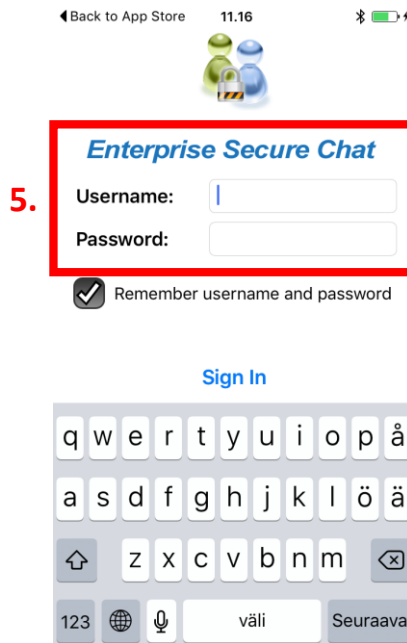
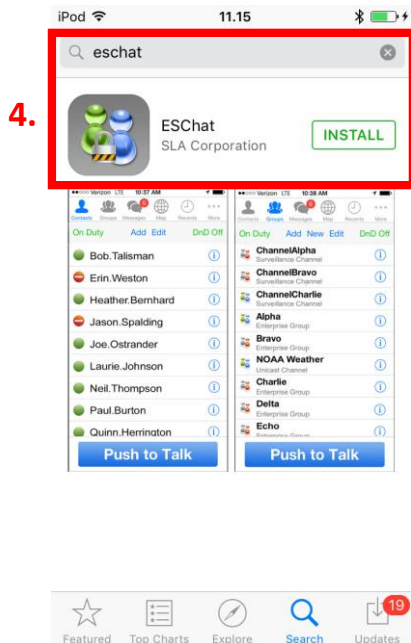
**NOTE:** The Voice Responder can only be paired with one device at a time. If you want to pair it to another device you need to perform an **Unpairing/ Software reset** by pressing and holding both soft buttons and both PTT buttons simultaneously, until the LED blinks once in yellow.



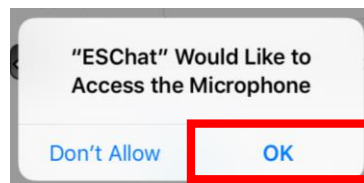
# B

## Installing the ESChat application into your iPhone

4. From your iPhone, go to the iTunes App Store, search for the application called **ESChat** and install it.
5. Open the application and login with the username and password provided by ESChat.



**NOTE:** If your iPhone gives you the following notification, you need to allow ESChat to have access to your phone's microphone for the application to work.



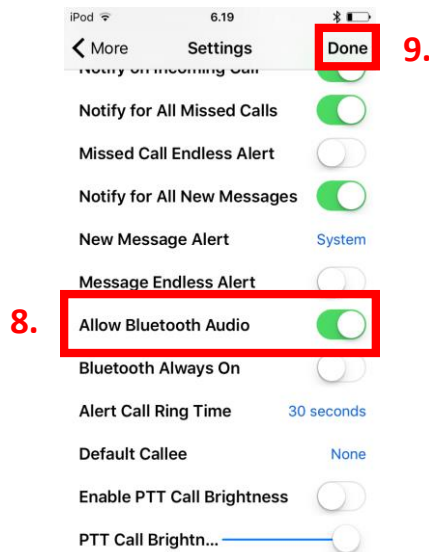
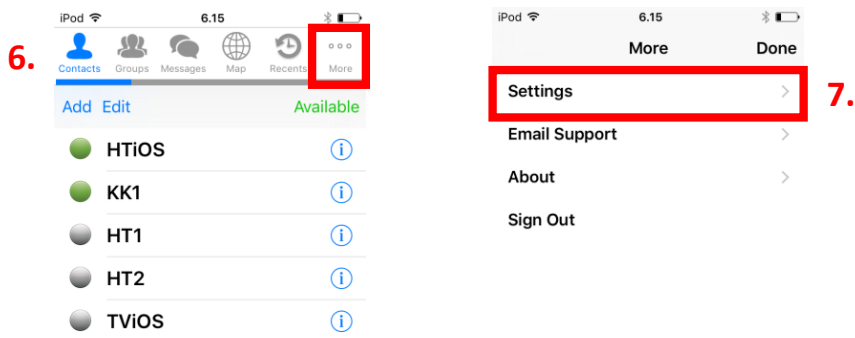
If you already have downloaded the ESChat application, simply log in with your username and password.



# C

## Enabling your PTT Voice Responder's speaker within ESChat

6. In the ESChat application, select 'More' displayed on the top right corner.
7. Select 'Settings'.
8. Near the bottom of the list turn on 'Allow Bluetooth Audio'.
9. Finally, select 'Done' displayed on the top right corner.



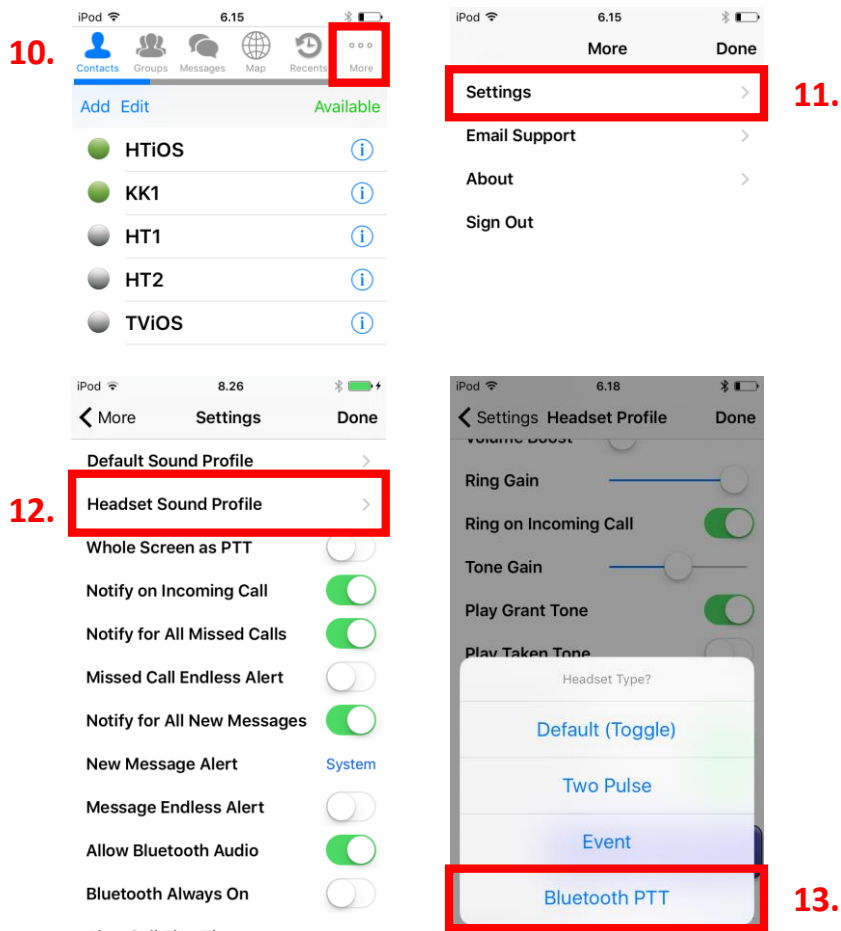
For more information on how to use the ESChat application please visit their website:  
[www.eschat.com](http://www.eschat.com)



# D

## Enabling your PTT Voice Responder's microphone within ESChat

10. In the ESChat application, select "More" displayed on the top right corner.
11. Select 'Settings'.
12. Near the top of the list, select "Headset Sound Profile".
13. From the bottom of the list, select "Headset Type" and from the list that appears, select "Bluetooth PTT".
14. Select "Done" displayed on the top right corner.



For more information on how to use the ESChat application please visit their website: [www.eschat.com](http://www.eschat.com)



# AINA PTT Voice Responder's main button functions when connected to ESChat



Button	Function
<b>Power ON/ OFF</b>	Press for more than 3 seconds to turn the device on/off.
<b>Primary/ Secondary PTT</b>	Press and hold to speak. Release when you are done.
<b>Volume buttons</b>	Press and hold to increase/ decrease the speaker's volume.
<b>Soft buttons</b>	<p>These buttons have multiple functions:</p> <ul style="list-style-type: none"> <li>• Press and hold the left soft button to (de)activate the LED.</li> <li>• Press and hold both soft buttons to (de)activate <b>Covert Mode</b> in which LED indications are suppressed and audio annunciations are only delivered through a headset.</li> </ul>

Visit [www.aina-wireless.com](http://www.aina-wireless.com) to find additional accessories, an extended user manual of the AINA PTT Voice Responder and more user guides. If you have any further questions, you can also email us at: [info@aina-wireless.com](mailto:info@aina-wireless.com)

